

On a Crystal of Apatite.

By S. HENSON.

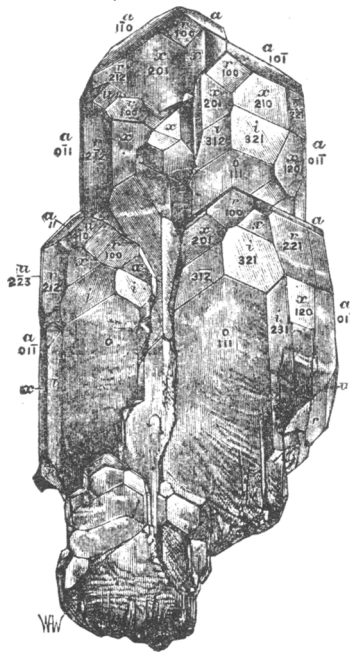
[Read February 15, 1883.]

THE accompanying engraving represents an exceptionally fine group of crystals of apatite, found in the Untersulzbachthal in Salzburg. The dimensions are those of the original, its colour is white with a delicate tint of mauve. This group is the finest of three of the most magnificent specimens yet found at this or any other locality, the largest one having been deposited in the national collection of minerals at South Kensington, while the third was unfortunately broken.

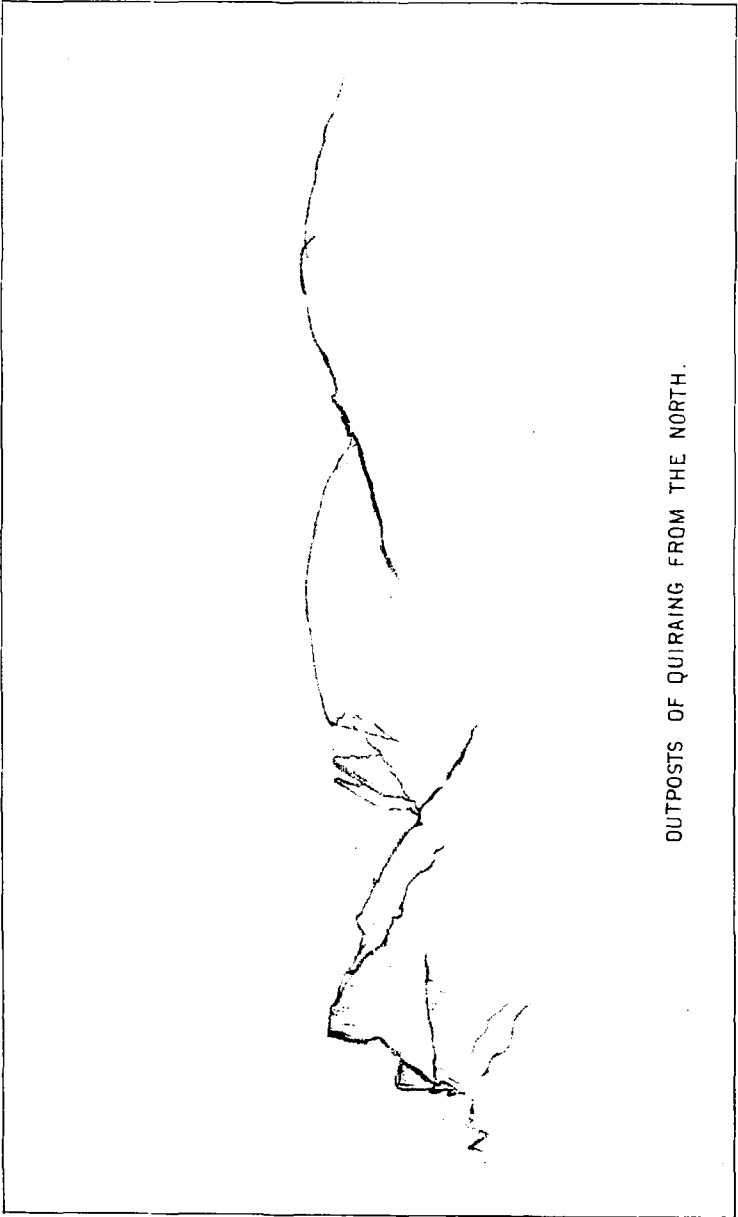
The exceeding limpidity and brilliancy of lustre of all the specimens found at this locality, together with the numerous planes and their symmetrical development, render them of unusual interest: they are found in association with epidote, sphene, amianthus, and occasionally crystals of calcite, which are always of extraordinary beauty and purity. Epidote

and amianthus are frequently found enclosed in the apatite, and, as is shown in the engraving, this particular specimen contains acicular crystals of epidote.

Mr. S. Henson, of the Strand, through whose hands this specimen has passed, has caused a mould to be made and the accompanying plate to be engraved. The crystal planes have been marked, with his usual great kindness, by Professor W. J. Lewis, F.G.S., of Cambridge.



10	90°	0'
10	157	05
20	139	17
20	130	13
70	124	20
00'	120	0
70	135	39
77	131	14



OUTPOSTS OF QUIRAING FROM THE NORTH.

M. F. H. 201

SUTHERLAND AMAZON-STONES.

FIG. 1.

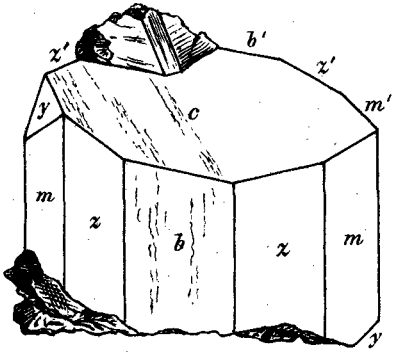


FIG. 6.

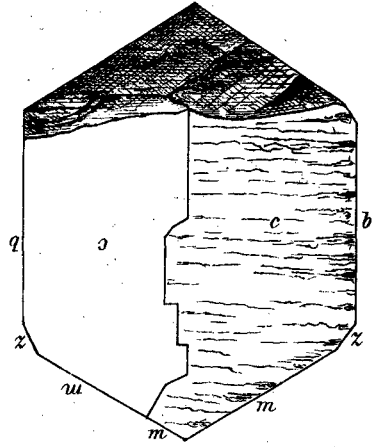


FIG. 2.

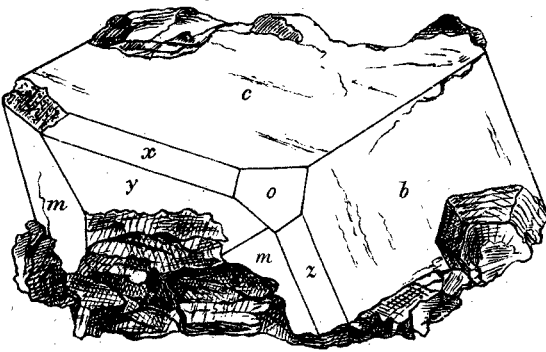


FIG. 3.



FIG. 4.

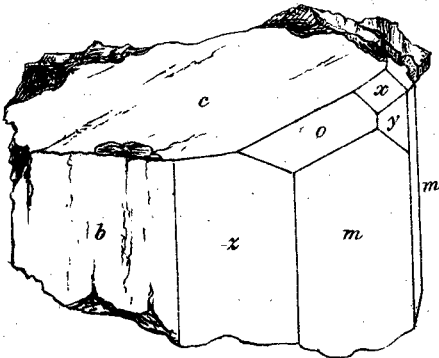
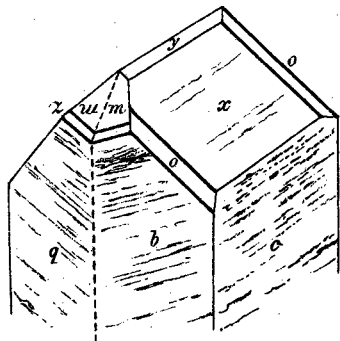
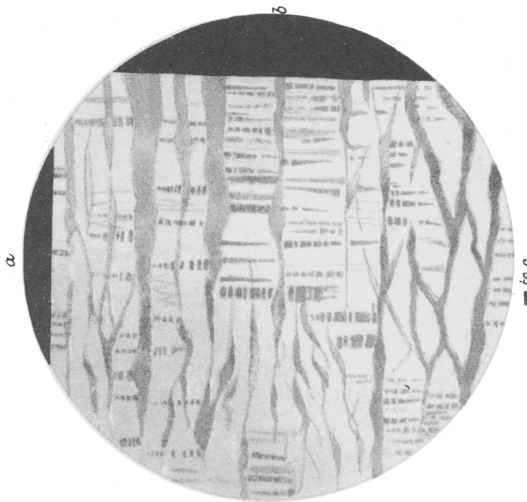
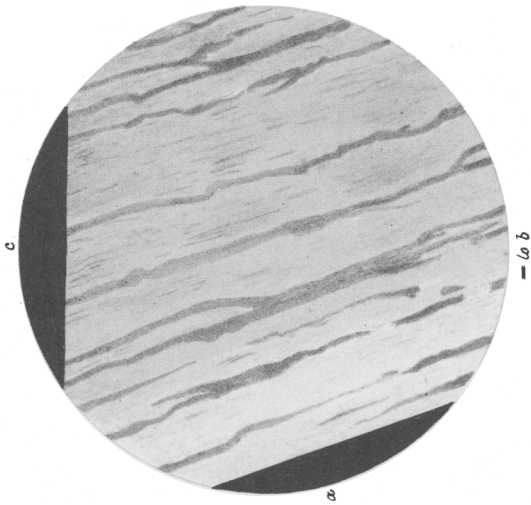


FIG. 5.



WILSON & SON LITH. BRN



AMAZONSTONE STRUCTURE.

M. F. H. DEL.