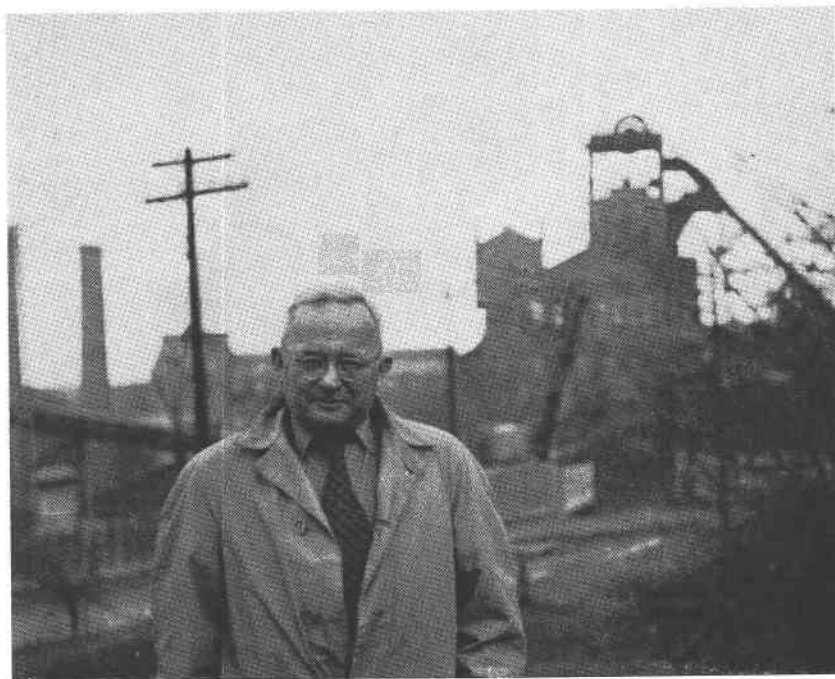


MEMORIAL OF LAWSON H. BAUER

CLIFFORD FRONDEL, *Harvard University, Cambridge, Mass.*

Lawson H. Bauer, for over 40 years chemist and finally Chief Chemist to the New Jersey Zinc Company at Franklin, New Jersey, died at the Franklin Hospital on January 27, 1954. Mr. Bauer was born at Mertztown, Pennsylvania, on August 18, 1889. After graduation from High School in Kutztown in 1905 he taught school for two years in Lehigh County, Pennsylvania, and then entered Lafayette College. An honor



LAWSON H. BAUER
1889-1954

student and member of Phi Beta Kappa, he graduated in 1911. Following several years of work in industrial laboratories in Maryland he entered the employment of the New Jersey Zinc Company at Franklin in 1913. Here, aside from his official duties, he was active in civic affairs in the town, as a member of the Board of Education and as President for many years of the Board of Health. Mr. Bauer's wife died in 1953. He is survived by two sons and two daughters.

The death of Mr. Bauer followed by the final closing in October, 1954,

of the Franklin mine after more than a century of operation and the death late in 1954 of Professor Charles Palache mark the end of an era in Franklin mineralogy. Mr. Bauer contributed directly through his analytical work to the mineralogy of the famous deposit that he knew so well, but his most important contribution, stemming from the unselfish and truly scientific desire to bring the mineralogy of Franklin to description and interpretation, was in aiding the flow of specimen material from the Franklin and Sterling Hill mines to investigators and collectors over the world. Very little is publically known of the details of these great and unique deposits, and the knowledge that has been gained has come in considerable part from his efforts in this regard, made with the permission of the Zinc Company, and the activities of earlier collectors such as Hancock and Roebbling.

Mr. Bauer published 18 mineralogical papers, all written in cooperation with other people. These included the description of 8 new mineral species: cahnite, larsenite, calcium larsenite, mcgovernite, loseyite, mooreite, yeatmanite and manganpyrosmalite. Many of these and other new species were first recognized by Bauer, chiefly from specimens obtained on the picking table—that almost unreachable Mecca of collectors—or from miners. The monographic work by Charles Palache, "The Minerals of Franklin and Sterling Hill, Sussex County, New Jersey," published in 1935 as Professional Paper 180 of the U. S. Geological Survey, contains over 70 analyses by Bauer, in part made jointly with his associate David Jenkins. A number of additional analyses have appeared in more recent publications. There are also many as yet unpublished analyses, all carefully preserved on labels glued to specimens in his personal collection. This collection, although small as compared to others amassed at Franklin, contained many type specimens and others of outstanding beauty or rarity. Among the latter are the finest known specimens of hodgkinsonite and the extraordinary twinned crystal of cahnite figured in Palache's work. The collection was purchased from Mr. Bauer's estate jointly by the U. S. National Museum and Harvard University.

Those collectors or students who visited Mr. Bauer's home to see his collection usually were grilled over the identity of a suite of about 60 specimens kept in a special tray. All were of identical size, although of very unlike color and appearance, and all observers were dismayed to be finally informed that only one species was represented, willemite. The less common Franklin minerals are much more troublesome, and innumerable identifications have been accepted solely on the authority that "Bauer said so."

Mr. Bauer became a member of the Mineralogical Society of America

in 1929 and he was elected a Fellow in 1932. His work is part of the history of Franklin, and warm personal memories will be carried by those fortunate to have known this spirited man.

BIBLIOGRAPHY

- BAUER, L. H. (with J. V. LEWIS), Cyprine and associated minerals from the zinc mine at Franklin, N. J.: *Am. J. Sci.*, **4**, 249 (1922).
- (with C. PALACHE), Hyalophane from Franklin Furnace, N. J.: *Am. Mineral.*, **11**, 172 (1926).
- (with H. BERMAN), Löllingite from Franklin, N. J.: *Am. Mineral.*, **12**, 39 (1927).
- (with C. PALACHE), Cahnite, a new boroarsenate of calcium from Franklin, N. J.: *Am. Mineral.*, **12**, 149 (1927).
- (with C. PALACHE), Mcgovernite, a new mineral from Sterling Hill, N. J.: *Am. Mineral.*, **12**, 373 (1927).
- (with C. PALACHE AND H. BERMAN), Larsenite and calcium larsenite, a new member of the chrysolite group from Franklin, N. J.; *Am. Mineral.*, **13**, 142 (1928).
- (with C. PALACHE AND H. BERMAN), Larsenite, calcium larsenite and the associated minerals at Franklin, N. J.: *Am. Mineral.*, **13**, 334 (1928).
- (with H. BERMAN), Friedelite, schallerite, and related minerals: *Am. Mineral.*, **13**, 341 (1928).
- (with E. S. LARSEN AND H. BERMAN), Norbergite from Franklin, N. J.: *Am. Mineral.*, **13**, 349 (1928).
- (with H. BERMAN), Loseyite, a new Franklin mineral: *Am. Mineral.*, **14**, 150 (1929).
- (with H. BERMAN), Mooreite, a new mineral, and fluoborite from Sterling Hill, N. J.: *Am. Mineral.*, **14**, 165 (1929).
- (with C. PALACHE), On the occurrence of beryllium in the zinc deposits of Franklin, N. J.: *Am. Mineral.*, **15**, 30 (1929).
- (with H. BERMAN), Notes on some Franklin minerals: *Am. Mineral.*, **15**, 340 (1930).
- (with H. BERMAN), Barium-muscovite from Franklin, N. J.: *Am. Mineral.*, **18**, 30 (1933).
- (with C. PALACHE AND H. BERMAN), Yeatmanite and sarkinite from Franklin, N. J.: *Am. Mineral.*, **23**, 527 (1938).
- (with C. FRONDEL), Nasonite and its relation to pyromorphite: *Am. Mineral.*, **36**, 534 (1951).
- (with C. FRONDEL), Manganpyrosomalite and its polymorphic relation to friedelite and schallerite: *Am. Mineral.*, **38**, 755 (1953).
- (with C. FRONDEL), Kutnahorite, a manganese dolomite, $\text{CaMn}(\text{CO}_3)_2$: *Am. Mineral.*, in press (1955).