

TRACE-ELEMENT DISTRIBUTION IN CASSITERITE AND SULFIDES FROM RUBANÉ AND MASSIVE ORES OF THE CORVO DEPOSIT, PORTUGAL: ERRATUM

SILVIA SERRANTI[§]

*Dipartimento di Ingegneria Chimica, dei Materiali, delle Materie Prime e Metallurgia, Università di Roma “La Sapienza”,
Via Eudossiana 18, I-00184 Roma, Italy*

VINCENZO FERRINI AND UMBERTO MASI

Dipartimento di Scienze della Terra, Università di Roma “La Sapienza”, P.le Aldo Moro 5, I-00185 Roma, Italy

LOUIS J. CABRI

99 Fifth Avenue, Suite 122, Ottawa, Ontario K1S 5P5, Canada

Owing to an error at the stage of impression, Figure 1 was printed without legends and lettering in the above article (Volume 40, part 3, pages 815-835). It is reproduced here, with apologies to the authors and readers.

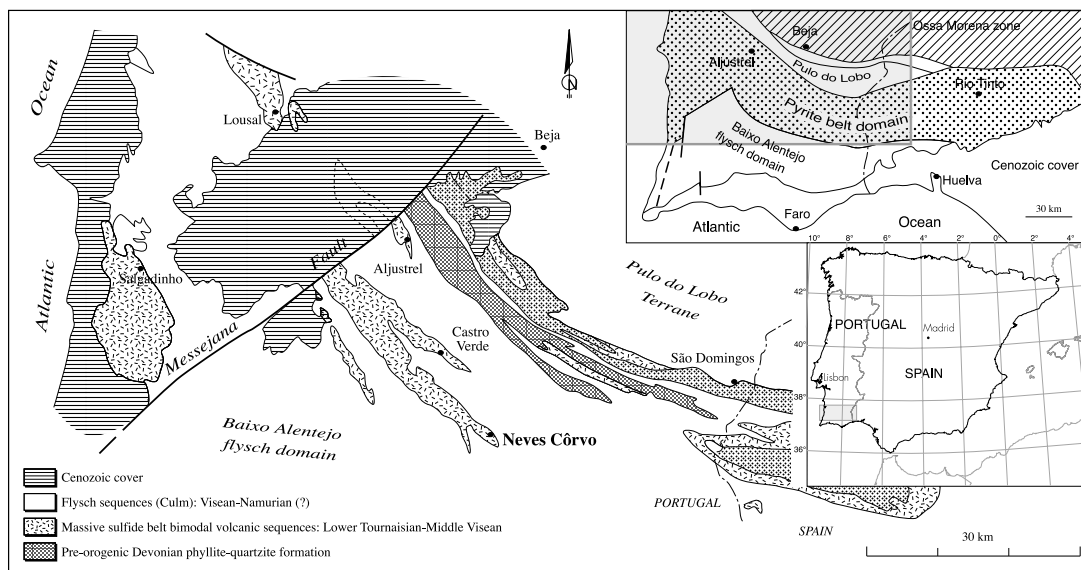


FIG. 1. Geological sketch-map of the Portuguese sector of the Iberian Pyrite Belt (IPB) and location of the Neves-Corvo VMS deposit. The inset maps show the location of the area depicted in the Iberian Peninsula (modified after Marcoux *et al.* 1996).