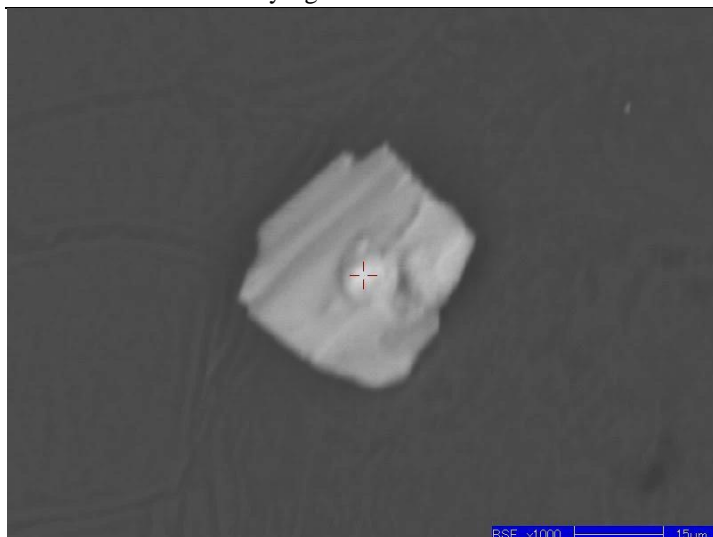


EPMA analyses for edwindavisite

phase	Point	oxides wt%							apfu									
		CuO	Na <sub>2</sub> O	P <sub>2</sub> O <sub>5</sub>	C <sub>2</sub> O <sub>3</sub>	H <sub>2</sub> O	NH <sub>3</sub>	Cl	Total	FCl-O	O	Cu	Na	P	C	H	N	Cl
Edwindavisite	Cu(C <sub>2</sub> O <sub>4</sub> )NH <sub>3</sub>	47.18			42.72		10.10		100.00	4.00	1.00				2.00	3.00	1.00	
Edwindavisite	Rowley-1a	48.47			42.72		9.36		100.56	3.92	1.00				1.95	2.71	0.90	
Edwindavisite	Rowley-1b	48.66			42.72		9.59		100.97	3.91	1.00				1.94	2.76	0.92	
Edwindavisite	Rowley-1c	47.74			42.72		10.13		100.60	3.96	1.00				1.98	2.98	0.99	
Edwindavisite	Rowley-1d	47.13			42.72		10.37		100.23	4.00	1.00				2.00	3.08	1.03	
Edwindavisite	Rowley-1e	47.74			42.72		9.73		100.19	3.96	1.00				1.98	2.86	0.95	
Edwindavisite	Rowley-1f	47.21			42.72		10.91		100.85	4.00	1.00				2.00	3.24	1.08	
Edwindavisite	Rowley-1g	47.74			42.72		10.64		101.11	3.96	1.00				1.98	3.12	1.04	



edwindavisite unknown